

# SAM - O - GRAM

Volume 5, Issue 5  
May, 1998

## Who's Who

### Officers:

President:	Bob Sencenbaugh	223-8238
Vice President:	Carolyn Bateman	750-1740
Recording Secretary:	Thalia Peletis	933-0392
Corresponding Secretary:	Jane Reller	665-2843
Treasurer:	Julie Beatty	360-9782

### Board of Directors:

Nancy Golden	838-5271	Andi Mast	450-7712
Heidi Nieman	660-1472	Michele Schmitt	770-2167

### '98 Committee Chairpersons:

All Breed Match:	Colleen Groseth	526-1437
Awards:	Debbi Secenbaugh	223-8238
Breeder Referral:	Martha Lageschulte	451-1737
Breeder's Showcase /		
Public Education:	Jane Reller	665-2843
Cheer:	Debbi Sencenbaugh	223-8238
DSA Liaison to SCA:	Debbi Sencenbaugh	223-8238
Historian/Librarian:	Tom Lisec	741-5778
Hospitality:	Steve Baugh	438-7235
Membership:	Janet Cherne	716-9173
Program:	Tom Lisec	741-5778
Local Specialty Show:	Carol Beatty	360-9782
	Julie Beatty	
Sam-O-Gram:	Thalia Peletis	933-0392
Sammy Rescue:	Deb Castro	220-7536
	Andi Mast	450-7712
Specialty Match:	Jane Reller	665-2843
Tournament:	Nancy Golden	838-5271
Ways & Means:	Steve Baugh	438-7235
Working Dog:	Michele Schmitt	770-2167

Article Deadline for June Issue:

June 1, 1998



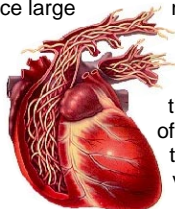
*Denver Samoyed Association, Inc.*

## Canine Heartworm Disease

Elizabeth L. Settles, DVM  
College of Veterinary Medicine, University of Missouri-Columbia

Canine heartworm infection causes disease primarily in the small pulmonary arteries and secondarily in the heart. *Dirofilaria immitis* adults are thin worms that reach 10 to 12 inches in length. The adult worms live in the peripheral branches of the pulmonary arteries and produce large numbers of microscopic offspring (microfilaria), which circulate throughout the bloodstream.

Heartworm disease is caused by the presence of the adults and number of different substances proteins. In the process, the is damaged.



the body's immunologic reaction offspring. The body produces a to destroy these foreign vasculature system of the lungs

The heartworm life cycle begins when a dog with circulating microfilaria is bitten by a mosquito. The mosquito takes up microfilaria with its blood meal; these mature into infective larvae within the mosquito. When the infective mosquito bites a dog,

*(Continued on page 5)*

### Table of Contents

1	Who's Who	/ Canine Heartworm Disease
2-3	Membership Meeting Minutes	
4	Board Meeting Minutes	/ AKC Public Education Kit for Children!
5	Canine Heartworm Disease (continued)	
6	As I See It	/ AKC Litter Registration-New Requirement
7	Working it Out – AKC Guidelines for Resolving Dog Club Issues	
8	How to Become a Sammy Angel / Shoppers!	
9	Alphabetic Guide to Whelping	
11	1998 Schedule of Events	
12	Denver Samoyed Rescue Report	/ Jokeline

## Membership Meeting Minutes

### 04/20/98 - Membership Meeting

#### Present:

Carolyn Bateman	Tom Lisec
Carol Beatty	Mary Lloyd
Julie Beatty	Thalia Peletis
Nancy Golden	Jane Reller
Linda Kitzman	Bob Sencenbaugh
Martha Lageschulte	Debbi Sencenbaugh

Guest : None

-Meeting was called to order at 7:40 PM by Bob Sencenbaugh:

-Review of the 03/16/98 membership meeting minutes for corrections.

Following corrections in **bold** were made:

- Specialty Committee: Application to **SCA** will be going out.
- Specialty Chair Report: Total income = **\$1931**. Total profit the same. Total other = **\$281**.
- Correction to Trophy Donation motion: DSA to determine if we will donate the cost of a trophy for the **'98 SCA National Specialty**.

Minutes were approved as written.

#### -President's Report:

Bob Sencenbaugh  
A Board meeting was held on 3/30/98. See (April issue) 3/30/98 Board meeting minutes.

#### -Secretary's Report,

Thalia Peletis:  
Several Newsletters received and passed around.

Thalia has compiled the first edition of the

#### **Denver Samoyed Association Historian CD!**

Contact Tom Lisec if you wish to check it out. A second copy will be kept with the Recording Secretary. The CD contains the following files:

- AKC Official Samoyed Standard.
- DSA Constitution and By-laws.
- DSA Motions: **1988-1997**.
- DSA Officers and Board Members: **1988-1998**.
- DSA Annual Awards for club member's dogs: **1988-1997**
- DSA Committee Guidelines.
- DSA Board and Membership Meeting Minutes: 1996-1997
- DSA Sam-O-Gram Newsletter: 1996-1997
- DSA Treasury - General and Rescue Fund: 1997.
- DSA Focus report: 1996
- DSA Brochure - Samoyed public education info.
- DSA Logo.
- DSA Membership application form.
- DSA Job Description of various officer and committees - partial list.
- DSR Logo.
- DSR Adoption agreement form.
- DSR Application for adoption form.
- DSR Foster home agreement form.
- DSR Foster home application form.
- DSR Committee guidelines.
- DSR Rescue Dog release form.
- Samoyed Club of America Code of Ethics.

#### -Corresponding Secretary's Report,

Jane Reller:  
**Motions made and tabled for voting at next membership:** "DSA to determine if we will donate the cost of a trophy to the Samoyed Club of Washington State Local Specialty (Range: \$5- \$50)."

#### -Treasurer's Report, Julie Beatty:

General Fund: \$ 4303.70

Rescue Fund: \$ 2270.30

Raffle Fund: \$ 14.25

A detailed report is on file.

#### -Committee Reports-

All Breed Match - Colleen Groseth

No report.

Awards - Debbi Sencenbaugh

No report.

Breeder Referral - Martha Lageschulte

No report.

Breeder's Showcase/Public Education - Jane Reller

Pictures from recent Showcase passed around.

AKC Publication called "The Public Education Corner", featured the Home Again Microchip and encouraged clubs to hold microchip clinics. DSA is considering this in conjunction with the All-Breed Match.

Jane distributed a few sample copies of the **DSA Club Brochure for New Members and Public Education**, put together by Jane and Thalia. This brochure includes the Samoyed's: history, characteristics, personality, size, and coat. It also contains important information on: feeding, health problems, grooming and care, bad habits, selecting a reliable breeder, types of breeding, and caring for your new puppy. In addition, it lists reference books, periodicals, web sites, and local training classes. On the last page it shows DSA's club meeting place and time, and membership chairperson name, phone and e-mail address.

Jane also developed a second brochure called "**Activities You Can Do With Your Samoyed**". It features photographs and brief descriptions on: conformation, obedience, agility, flyball, pet therapy, Canine Good Citizen, Sledding/Carting, Excursion Sledding, Skijoring, Herding, Pack Hiking and Weight Pull. It also explains the SCA Working Dog Title.

Jane is also working with Deb Castro on a **Rescue Brochure**.

Cheer - Debbi Sencenbaugh

Cards were sent to the following members:

Kathi Metter (brother Mike's passing), Heidi (Toga's passing), Steve and Denise Baugh (new Baby Boy - Evan!!), and Kris Schopfer (new litter!).

DSA Liaison to SCA - Debbi Sencenbaugh

Passed around the most recent communications.

Debbi encouraged members to get in touch with our SCA board members if they have input or comments on the issues listed.

1998 National Specialty Packets have been mailed.

Historian/Librarian - Tom Lisec

Tom brought in a sample of the books available from the library.

Tom also brought in the **March 1998 National Geographic** which featured an article on the Nomadic tribe called the **Nenets**, which were formally known as the Samoyed people.

Hospitality - Steve Baugh

Bob Sencenbaugh brought sodas.

Membership - Janet Cherne

No report.

Program - Tom Lisec

Tonight we had program, a video on the behind the scenes operation at Jack Onofrio.

June program: Alan Odum, AKC representative, will

(Continued on page 3)

## Membership Meeting Minutes

(Continued from page 2)

describe the Judge Approval Process.

Sam-O-Gram - Thalia Peletis

Received a copy of the WooWooWoo review, Samoyed Club of Washington State's newsletter. We will begin exchanging club newsletters with them, starting with the next issue. We currently exchange newsletters with the following organizations:

- Samoyed Association of Metro
- Samoyed Club of Southern California
- Samoyed Association of Madison
- Willamette Valley Samoyed Fanciers
- Samoyed Fanciers of Central Florida
- Heart of America Samoyed Club
- Samoyed Club of Houston
- Samoyed Association of Minneapolis
- SCA Bulletin
- Colorado Dog Fanciers Association
- The Scoop

Sammy Rescue - Deb Castro/Andi Mast

April 30<sup>th</sup> committee meeting to discuss budget and review guidelines will be held.

Specialty Match - Jane Reller

Match will be held on Sept 12<sup>th</sup> at Sterne Park.

Jane is open to suggestions for Judges.

Club needs ribbons. Last time we got 5 years worth from the Ribbon Ranch. Bob gave Jane go ahead to order new ribbons.

Tournament - Nancy Golden

Tournament will follow the Specialty match.

Judges: Julie Morris Breeder, Lynette Hansen AKC Judge, Kim Raleigh other judge.

At the July membership meeting Nancy will bring a sign-up list to pre-register your Samoyed for the Tournament, at a discounted entry fee.

Ways & Means - Steve Baugh

No report.

Working Dog - Michele Schmitt

No report.

Specialty - Carol Beatty

\* A motion was made and seconded to adjourn the Regular meeting and convene the Specialty membership meeting. Meeting chair was turned over to Carol Beatty - 1999 Chairperson

CKC gave the wrong date for the Specialty. It's now Feb 19<sup>th</sup>. Carol will send another letter to SCA with the corrected date.

Meeting chair was turned over to Bob Sencenbaugh - 2000 Chairperson

**Bob Sencenbaugh volunteered to be our Year 2000 Local Specialty Chairperson. Thank you Bob!! Debbi Sencenbaugh had previously volunteered to be this show's judges contact. Thank you Debbi!!**

The membership voted on the nominees and the following Year 2000 judges were selected (1999 judges also reprinted for your reference):

	2000	1999
Breeder Judge:	Don Hodges	Madeline Fish
Obedience Judge:	Nancy Pollack	Carol Joy Evert
Working Sweeps:	Kent Dannen	Connie Rudd
Sweepstakes:	Kathi Metter	Lorrie McAllister

\* A motion was made and seconded to adjourn the Specialty meeting and reconvene the regular membership meeting. Meeting chair was turned over to Bob

Sencenbaugh.

### -Unfinished Business:

Need updated roster from the Treasurer.

### Following motions made in the 3/16/98 membership meeting were voted on:

- "Donate the remaining '98 DSA Local Specialty 16 soft-slip collar trophies to DSR" - **Motion failed.**
- "DSA to determine if we will donate the cost of a trophy for the '98 SCA National Specialty" - **Motion passed.**
- "DSA will offer the Best of Winners Trophy (\$80) for the '98 SCA National Specialty" - **Motion passed.**
- "DSA to donate \$100 to SCA Foundation". **Motion amended** to the following: "DSA agrees to donate the sum of \$100.00 a year to the SCA Foundation, for research into problems affecting Samoyed dogs. The donation will be submitted, via the Cheer committee, in memory of DSA members dogs, who have passed away during the current calendar year. The amount submitted per dog to the foundation each year will vary as the number of dogs who have died varies." - **Motion passed.** Further explanation of donated money: If only one members dog dies it will be a \$100 dollars per dog and if 100 dogs die it will be \$1 per each dog. We expect the number to be about \$10 per dog based on the last couple of years.

### -New Business:

Following motion made by the board in the 3/30/98 meeting, was voted on:

"Limit club members to two Local Specialty judge nominations, per category." - **Motion fails.**

**1998 Budgets from all committee chairpersons are due.** Please submit them to Bob Sencenbaugh. They will be reviewed by the board at the next board meeting, Monday, May 4<sup>th</sup>.

Nancy will ask the Kennedy's if they will consider donating a Samoyed print for our raffle. Artist, Scott Kennedy is famous for his paintings which many time features Samoyed dogs, including some of Nancy Golden's line.

### -Barks and Growls:

Heidi - **CH. Saratoga's Like a Rock** - finished his championship on 4/1798 at the Salina Kennel Club show. He also sired his first litter, 4 males and 2 females!

Bob and Debbi - **Artic Mist Forget Me Not** - went BOW in Wichita under Bev Capstick. **Trailblazer Rumor Has It** - completed her Working Sam in Herding Instinct, Skijoring and Weight pull.

Mary Lloyd - **Krystall's Treasured Memory "Samson"** - received his first 2 points at the Canada Del Oro in Tucson, AZ under judge Robert Ward.

Steve and Denise Baugh have a recent addition to their family, a new baby boy named Evan!

### Congratulations to all!!

-Meeting was adjourned at 8:30 PM.

## Board Meeting Minutes

### 05/04/98 - Board Meeting

#### Present:

Carolyn Bateman Heidi Nieman Bob Sencenbaugh  
Nancy Golden Thalia Peletis  
Andi Mast Jane Reller

-Meeting was called to order at 07:15PM by Bob Sencenbaugh.

#### -President's Report, Bob Sencenbaugh :

##### AKC Correspondence:

- Effective immediately, AKC adapted a policy statement on participation in conformation events by disabled handlers.
- Beginning January 1, 1998 AKC requires sanctioned clubs to develop and submit a *Disaster and Emergency Plan* for any member or licensed event. According to the policy, **event** is defined as a show given by a club that is a member of, or licensed by, the AKC, at which championship points are awarded; or a trial or test given by a club that is a member of, or licensed by, the AKC, at which qualifying scores towards titles are awarded.
- Guideline from AKC on working out dog club issues.

#### -Recording Secretary's Report, Thalia Peletis:

No Report.

#### -Corresponding Secretary's Report, Jane Reller :

No Report

#### -Treasurer's Report, Julie Beatty :

No Report

#### -Unfinished Business:

#### -New Business:

#### 1998 Estimated Budget

#### Committee Budget Expenses

All Breed Match: \$200  
Awards: \$250  
Breeder Referral: \$0  
Breeder Showcase/  
Public Education: \$100  
Cheer: \$300  
DSA Liaison to SCA: \$0  
Historian Librarian: \$40  
Hospitality: \$0  
Membership: \$0

Program: \$0  
Local Specialty Show: \$1400  
Sam-O-Gram: \$250  
Sammy Rescue: \$250  
Specialty Match: \$60  
Tournament: \$50  
Ways and Means: \$0  
Working Dog: \$300

#### Fixed Expenses

Club Insurance: \$275  
Raffle License: \$70  
Misc Assoc. dues: \$50  
SCA Trophy Donation: \$80  
**Total Expenses: \$3585**

#### Fixed Income

Membership Dues: \$570\*

=====

**Difference: \$3015**

\* As of this date we do not have a current membership roster, so the Board estimated 38 members @ \$15 = \$570.

Estimated budgets were based on submitted reports by the committee chairperson. These detailed reports are on file with the President. With the exception of Breeder Referral that requested \$0 budget dollars, if no report was submitted, \$0 dollars were budgeted.

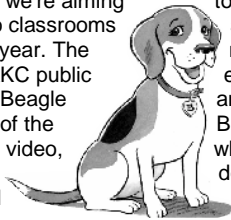
Some committees traditionally make a profit, such as All Breed Match, and Specialty Match. However, the board wished to be conservative and therefore the budget dollars reflected represent the fixed expenses for this committee, as if no profit would be made on this event.

The Board approved the submitted budgets with knowledge the current treasury balances as of 4/20/98 equaled \$6588.25. However, the Board will be stressing at the upcoming membership meetings the importance of fundraisers and committed volunteers for events such as the All Breed Match, Specialty Match, and Casino Trip.

-Meeting was adjourned at 08:10 PM.

## AKC Public Education Kit for Children

Bailey the Beagle and the AKC's public education department are proud to present the new Best Friends Teaching Kit for grades K-6. We've provided nearly 50,000 Best Friends kits since introducing the program in 1992. With your support, we're aiming to introduce 8,000 new kits into classrooms across the United States this year. The Friends features AKC public mascot Bailey the Beagle and includes an expanded version of the video. The original video, which featured fire department dogs, police dogs, bomb squad dogs, and assistance dogs, showed how dogs bring joy and friendship to people of all ages and enhance the lives of people.



The new video contains the footage from the original version and takes the responsible dog ownership message a step further by focusing on the specifics of basic dog care. New video footage highlights three different children

who explain alongside their purebred dogs the importance of feeding, grooming, training, vaccinations and regular physical exams. The Teacher's Guide publication, including lesson plans and student activities, received a design facelift but retains the same strong educational content set forth in the original kit.

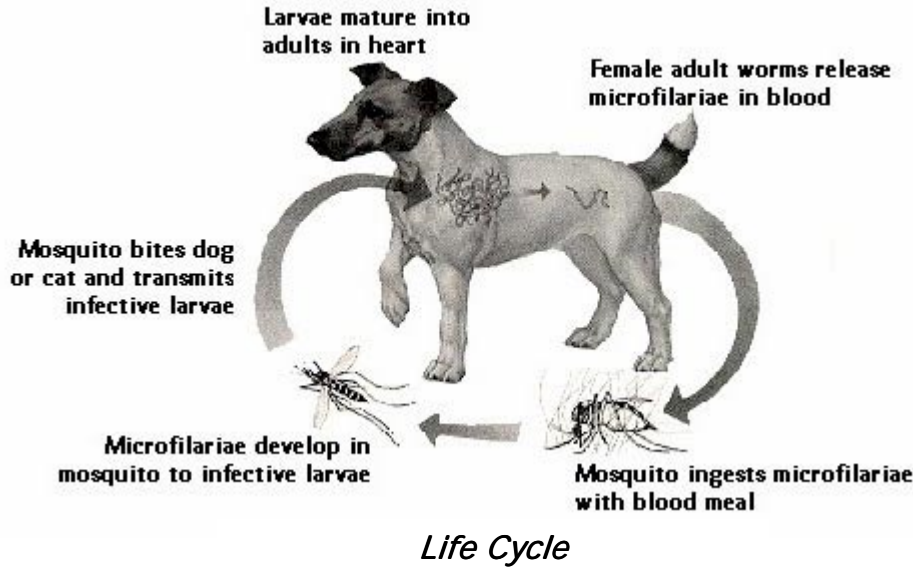
The AKC offers complimentary copies of the Best Friends Kit to classroom teachers, public education coordinators and other people involved in educating groups of children. To order the new Best Friends Teaching Kit, complete a Children's Education Materials Order Form (OMED01) and mail or fax it (919) 233-3627, to the AKC, or call Customer Service at (919) 233-9767. There is a limit of one kit per school or club.

We trust the new **Best Friends Teaching Kit** will enhance your public education efforts, and we look forward to your support and comments!

via AKC February '98 Public Education Corner Web Page

# SAM-O-GRAM

## Canine Heartworm Disease



(Continued from page 1)

larvae are injected into the dog's skin. Once in the dog, the larvae migrate and mature into adult worms in the blood vessels of the lungs. The adults (male and female) produce microfilaria after about six months.

Canine heartworm is widespread throughout the world, but mainly occurs in the tropics, subtropics and some temperate areas. It has been reported in all 50 of the states. It is found in dogs, cats, foxes, wolves and other wild carnivores as well as in sea lions and humans.

### Diagnosis

Heartworms must reach maturity (about six months from infection) before tests for heartworm antigens or microfilaria become positive. Because of this, there is no reason to test puppies less than 6 months old.

The two basic methods for detecting heartworm infection are microfilaria testing and antigen testing. Antigen tests look for the presence of adult female worms. These tests are almost 100 percent specific for *Dirofilaria immitis*, but may be falsely negative if there is a low burden of worms. Microfilaria tests are done by Knott tests or membrane filtration tests. These tests are also very specific, but may be negative if the adult worms are not producing offspring or if the body is destroying the offspring.

Recently it has come to light that dogs on monthly heartworm preventative medications will become microfilaria-negative if they are infected with heartworms before or during preventative administration. Therefore, all animals on a monthly preventative should be tested by antigen tests. Dogs on daily preventatives should be checked for microfilaria prior to starting preventative medication, since these drugs may cause severe adverse reactions in animals with circulating microfilaria.

### Symptoms

Clinical signs of heartworm disease may occur at any stage of the infection. The physical presence of the worm has little effect on the disease state. The disease state is caused by the body's own immune reaction to the worms. This reaction causes the small arteries of the lungs to thicken, which makes the heart work harder to pump blood into the lungs. The reactions in the lungs also make it more difficult for

normal exchange of oxygen and carbon dioxide to occur. These changes lead to clinical signs that include coughing, exercise intolerance and indications of right heart failure including fluid accumulations in the chest and abdomen.

### Prevention

Prevention of heartworm infection can be accomplished by a number of medications. Diethylcarbamazine (DEC) is a daily preventative. Ivermectin and milbemycin are preventatives that are given once a month. These medications are instituted only after negative heartworm tests are obtained. Dogs can remain on a heartworm preventative year round or only during the mosquito season. In any event, the dogs should be retested each year.

### Treatment

Treatment of heartworm infection involves different drugs for eliminating the adults and microfilaria. Thiacetarsamide sodium intravenous injection is the only available treatment for adult worms. Unfortunately, the death of the worms can cause problems even worse than the presence of live worms. The dying and dead adult worms can cause blood vessels in the lungs to clog, which can develop into fatal lung disease. The chances of this occurring can be greatly reduced by enforcing strict rest for a minimum of six weeks after treatment.

Microfilaria are eliminated about three weeks after adult treatment. A number of different preparations are available, including Dizan (the only drug labeled for this purpose), levamisole, ivermectin and milbemycin.

### Summary

Heartworm disease is a problem throughout the United States. It takes approximately six months from the time an infective mosquito bites a dog for the worms to mature and produce microfilaria. Testing of dogs should be done on a yearly basis. Preventative medication also should be administered year-round.

Symptoms of heartworm disease can occur from about four months after infection to years later. Treatment of heartworm infection can cause disease at least as bad as, if not worse than, the infection itself. Preventing heartworm infections with daily or monthly medications is the best way to manage this potential disease state.

## As I See It

Well, winter and snow are behind us now. While many of us are sorry to see sledding and skijoring gone for the season, the advent of spring and summer brings local shows. Because of this warmer weather many of us will be setting up outside under canopies. As I see it, this arrangement offers us many opportunities.

First, as you all know we have lots of visitors at the spring and summer shows. Many of them will stop by, to look at and talk to you about your Sams. If every member would keep several copies of the DSA brochure, that Jane and Thalia are completing, we could pass out a lot of valuable information on the breed and the club. This would keep the information consistent and uniform. If each of us put several copies in our tack boxes, the brochure will always be available.

The next opportunity comes with setting up for these shows. I remember back in the late 80's when I was a real novice (I am a semi-novice now) we always set up with a large group which included Judy Mears, Jan Cherne, Julie Morris, Nancy Golden, and others. Debby and I could always count on help and tips in grooming, and a relaxed fun time. Well it is several shows later, and I for one can still use the help and advice. Let's try to seek out other club members and set up together. In addition to creating a club get together, it will create a sea of white, which will attract potential new members and prospective puppy people.

Finally, when you are finished grooming, or just taking a break, how about sharing some of your knowledge with others. There may be other members, or newcomers, who can use some help, but may be afraid to or don't know how to ask. If you stop by and offer help I am sure they will be very grateful.

While it's true the conformation ring is about competition; helping each other to show the best possible representative of the breed, makes winning that much more exciting. Another benefit comes in how others see us as a group. If they see us a group of people so dedicated to the competition that we don't have time for each other till the judging is done; they will probably decide not to participate. On the other hand if they see a group dedicated to the breed, and willing to help newcomers, people who are relaxed and enjoying the show, they will see a group anyone would like to join.

Good luck to everyone during these upcoming shows, and remember it is  
**just a dog show.**

Bob Sencenbaugh  
DSA President



## AKC Litter Registration – New Requirement

### News Release

#### FOR IMMEDIATE RELEASE

**Contact:** Valerie Geiss  
Public Relations Manager  
(212) 696-8265

#### THE AMERICAN KENNEL CLUB ANNOUNCES NEW LITTER REGISTRATION REQUIREMENT

New York, New York -- May 1, 1998 -- The American Kennel Club (AKC) announces that it will require the signatures of all co-owners of the dam on litter registration applications effective January 1, 1999.

Present practice requires that only one co-owner sign a litter application, and that all co-owners sign the individual dog registration application. If a dispute arises among co-owners, and one of them consequently will not sign the individual application to register a puppy, then the person who bought that puppy cannot register it. By requiring all dam owners' signatures at each stage of the registration process, the AKC seeks to reduce the frequency of such occurrences. The requirement that only one of the

sire's co-owners sign the litter application is not being changed.

The new litter registration application will be put into circulation as of May 1, 1998 and may be used now. The new form, which has a sufficient number of spaces for the signatures of all the co-owners, is being introduced in May so that breeders will have the opportunity to become familiar with it prior to next January (as well as to ensure quality processing as soon as possible.) As of January 1, 1999, all litter applications must have the signatures of all of a dam's co-owners or the application will not be accepted.

An announcement and the new application will be sent to all clubs and AKC delegates, as well as featured in the **Gazette**.

The new registration form can be obtained by calling AKC Customer Service at (919) 233-9767. Representatives will also be available to answer any questions regarding the forms. The form is also available on the AKC website as of May 1st at: <http://www.akc.org/regforms.htm>.



## Working it Out — AKC Guidelines for Resolving Dog Club Issues

The American Kennel Club proudly works with approximately 4500 clubs, including 140 parent clubs – all dedicated to the advancement of purebred dogs. These clubs observe bylaws approved by the AKC, and their members work together to serve the best interests of purebred dogs.

Local clubs generally meet numerous times a year, and members may bring to the chair's attention any matter related to issues being discussed. Members may also write to the club secretary, asking that concerns or issues be directed to the board's attention. Parent clubs meet annually, are best contacted by writing the secretary by certified mail, return receipt requested, asking that the board of director review concerns or issues raised.

Generally, officers of these clubs conscientiously administer their bylaws to provide fairness for all members. Of course, given the passions and competitive spirit that infuse much of the sport, it is inevitable that occasional issues, debates and even disputes arises.

### Common Issues

Among common issues and subjects of debate are those involving:

#### Election of Officers and Directors

For example:

- The deadline dates for the appointment of the nominating committee, meeting of the nominating committee, and mailing of the nominating committee's slate are not adhered to.
- The dues payable date or grace period falls during the nomination/election process, causing the good standing of a nominated candidate to be questioned.
- The confirmed acceptance of each candidate nominated is not secured before the slate is mailed.
- The members are not given adequate time to submit additional nominations.
- Additional nominations are accepted at the election meeting when (according to the bylaws) they should not be permitted.

#### Processing of Membership Applications

- The application is not processed in a timely manner.
- The application is not voted on by secret ballot.
- The applicant is not advised of the application's status in a timely manner.

#### Disciplinary Procedures

- All disciplinary actions are not carried out in executive session.
- Charges, date or time and location of the hearing are not mailed well in advance of the hearing.
- Board members who have personal involvement in the disciplinary matter to be addressed, or who may appear as

witnesses, have not excused themselves from the entire process.

- The defendant is not permitted to personally appear or bring witnesses.

Often disagreements stem from a lack of communication. Sometimes this is made worse by personality conflicts. **In the vast majority of cases, disputes may be resolved by a careful reading of the club bylaws, and a dispassionate discussion of the fact with club officials.**

### Five Suggestions for Resolving Disagreements

By following these simple suggestions, you may usually avoid unnecessary problems, improve chances to resolve issues, and protect your club from angry, emotional arguments that don't focus on the facts.

#### 1 – Read Your Club's Bylaws Carefully

Often, a careful reading of your club's bylaws will give you the answer. In our experience, almost every dispute can be answered by a clear understanding of the club bylaws.

If you don't have a copy, request one from the club secretary in writing. If copies aren't available, write to the AKC Club Relations Department, and include a copy of your correspondence with the club secretary. We'll provide a copy of the bylaws if necessary.

#### 2 – Don't Let it Get Personal

It never accomplishes anything positive when a disagreement over policy or procedure becomes personal. Stick to the facts, and be willing to consider all aspects of an issue. Respect the viewpoints of fellow club members, and ask that they respect yours. In that kind of atmosphere, it is far more likely that you can come to a mutually agreeable solution.

#### 3 – Communicate in Writing with your Club Officers

When you take the time to put your concerns in writing, and receive your replies in writing, communications remain clear. All too often, conversations by phone or face-to-face can lead to misunderstandings where parties have different recollections of what took place. By communicating in writing, there is far less chance of mix-ups – plus you have a clear record of what has been said.

#### 4 – If There's an Impasse, Consider Mediation or Arbitration

When matters remain unresolved, you might consider introducing a bylaw amendment of modification to the stranding club rules to clarify the issue and avoid future repetitions. Another suggestions: Consider asking for help from parliamentary or mediation/arbitration authorities. They exist to help resolve disputes in a fair and orderly process. Remember, is you decide to hire an attorney to litigate an

issue, you may have to bear the full cost of a lawyer. Always try to exhaust all other avenues of resolution first. The parliamentary of mediation/arbitration services frequently utilized are:

National Association of Parliamentarians  
6601 Winchester Avenue, Suite 260  
Kansas City, MO 64133-4657

American Arbitration Association  
140 West 51st Street  
New York, NY 10020-1203

### 5 – If You're Still Not Satisfied, Write AKC – and Stick to the Facts.

We're always available to help. But the AKC should be the last, not the first, resort. Contact us in writing only after you have given the club a reasonable opportunity to respond and resolve the situation. Write to:

The American Kennel Club  
Club Relations  
51 Madison Avenue  
New York, NY 10010

Remember, we must have the facts. We'll want to know what bylaws was violated. When? How was it violated specifically? What steps did you take to resolve the problem with the club? Was it in writing? Are copies of all correspondence included or available?

### A Final Note

Remember, the vast majority of clubs do a very good job of resolving their problems, and the answers to almost all disagreements are clearly set forth in the club's bylaws.

The AKC does not consider differences in philosophy and management as bylaw-related matters. If most members of the club feel the board of directors isn't sensitive to a concern or need, they have the orderly means – set forth in their bylaws – to take action within the club to address the situation. And they can always express their dissatisfaction at the club's next election.

We hope these guidelines help you avoid unnecessary conflict if an issue arises. If you have additional questions, feel free to write us.

*via The American Kennel Club*



## How to Become a Sammy Angel

*Editors Note: As noted in the previous issue, Sammy Angels donated \$154, which along with DSA's \$192 donation, completely covered the cost of Dutchess' surgery. Dutchess was a DSR placed Sammy that is now in training as a service dog.*

The Sammy Angels are a group of people who have pledged \$100 each to help with Samoyed rescue expenses. The Sammy Angel funds are available to any Sammy rescue person or rescue group. I am the facilitator for the Angels. People can contact me to request funds for themselves or someone else. (To avoid problems, we get receipts from vets, boarding kennels, or other providers and reimburse from those). For those with some funding, this is a backup source of money. For those with no other funding, this can be a primary source.

Would you like to join the Sammy Angels? Just make a commitment, for one year, to provide up to \$100 for medical or other special expenses for a rescue Sammy. You will be contacted when there is a need. You then decide whether or not to donate in that particular case. (You don't "have to" donate if you can't at that time.) You can also pledge \$100 in someone else's name, so they can be a Sammy Angel too. (It's a \$100 pledge per person, \$200 per couple, etc.) You can make a pledge in honor of, or in memory of, an animal or person.

When I get a request, I forward it to the Angels. Each person decides how much, if any, they want to donate. You can write a check, or I can take credit cards through my business. (I will cover the credit card fees so the full amount of your donation goes to rescue.) Angels can deal directly with the rescue people (personally get the receipts and send the money). Or I can handle the paperwork.

This avoids asking people for advance donations that may sit in a bank, unused, for months. It avoids the need for bookkeeping, for setting limits on the money available per dog, for a committee to make decisions (and maybe fight about them), and for reinventing the wheel every time a case comes up. It's an easy, fast way to connect those who need help and those who are willing and able to give it. And it leaves all decisions in the hands of the individual donors.

To help Sammies in need, please be an Angel and email me (Alorah@aol.com) or call me at 303-637-9370 to sign up.

Rosemary Babb

"The bond with a true dog is as lasting as the ties of this earth can ever be." - Konrad Lorenz

## Shoppers!

### For those who *SHOP 'TIL YOU DROP !!!*

(and those who aren't quite as dedicated but do get out once in awhile...)

### You can help *Denver Samoyed Rescue !!*

Have you seen -

- The school folder with a Sam pup on the front?
- How about the puzzle(s) with the Samoyed puppies
- The Samoyed gift bag?
- Maybe the note pad with a Samoyed pup on the cover

- The glass "snow ball" with Sammies inside?
- We've all seen greeting cards!
- Deck of playing cards?
- Note cards?



What else have you seen - *IT WAS TOO CUTE!!!*  
(but you didn't really need it). Don't forget about Rescue!



**Anytime you see something "Sammy oriented" - that doesn't cost an arm and a leg - please consider the purchase and donate it to Denver Samoyed Rescue. These items will be sold/raffled/auctioned off later in the year to benefit our smiling, fluffy white, friends.**

P.S. The items don't necessarily need to be "Samoyed" - how about one of those collapsible dog bowls? Any dog (and his person) would find that handy!

Please contact Deb Castro, 220-7536, if you have any questions (or donations!).



## Alphabetical Guide to Whelping

**A**bnormal Birth. The only kind you hear of after you have your bitch in whelp.

**B**ox for Whelping. Essential piece of equipment which is used at the onset of labor, but which is later left in order to produce the first pup on your bed.

**C**ardiac Arrest. Not common in whelping bitches, but often seen in owners around 62nd day of bitches gestation.

**D**og. What you wish you had bought in the first place.

**E**uphemisms. For some reason adopted by breeders. e.g. "Puppies are thriving" means puppies have just eaten next months housekeeping budget in five days.

**F**alse Alarms. Games played by whelping bitches to keep owners on their toes.

**G**arden. What you had before your puppies.

**H**and Rearing. Not recommended unless you have eight hands.

**I**mperfections. Your puppies, of course, have none.

**J**oy. Despite other comments, puppies bring a lot of it with them.

**K**ennel. That shed in the garden that used to stay empty until you stored tools in it.

**L**ong Sleep Ins. What you don't have for a very long time.

**M**ilk. You will need a lot of it. Recommend developing friendship with someone in the trade.

**N**ext time you'll be more organized!

**O**ld Clothes. The only kind you have after rearing puppies.

**P**edigree. After writing out a five generation pedigree eight times, you will agree there is a lot to be said for mongrels.

**Q**uota. Dictionary defines this word as "finite quantity". Visualize litter of eight - and then number nine arrives.

**R**efurnishing. Takes place after sorting out debris once the last puppy is gone.

**S**tress. Can be bought in cans. Can also be found accompanied by strain in owners.

**T**eeth. Teething puppies are an upholsters dream. See "R".

**U**seful Articles. Scissors, cotton, LARGE WHISKY.

**V**et. The person whose phone number you learn by heart.

**W**eaning. Excellent method for getting the smallest amount of milk, food over the largest area of floors, walls etc. in the shortest time.

**X**-rayed. What your head should have been before you started all this.

**Y**ellow Fever. About the only disease you decide the puppies don't have when they sneeze the first time.

**Z**igzag Zoom! Puppies do it when you try to catch them to put them back in their kennel.

## 1998 Schedule of Events

Date	Organization	Event	Location	Contact	Conf. Judge (if Show)
<b>May 8</b>	<b>Samoyed Assoc. of Minneapolis - St. Paul</b>	<b>Specialty - Close</b>	<b>Brooklyn Park, MN</b>	<b>Show Sec Lois Noble</b>	<b>J. E. Clark Dana Cline (Sweeps)</b>
<b>9-10</b>	Greater Emporia KC	Show - Close 4/22	Emporia, KS	Onofrio	H.M. Fisher H.L. James
<b>9-12</b>	Sangre De Cristo KC Rio Grande KC Chaparral KC	Show - Close 4/22	Albuquerque, NM	Onofrio	M.P. Tucker R.H. Menaker N.D. Simmons
<b>15</b>	<b>Samoyed Club of San Diego</b>	<b>Specialty - Close 4/28</b>	<b>Rancho Sante Fe, CA</b>	<b>B. Lowe Show Sec</b>	<b>R.J. Caswell Jr. P. Cingota (Sweeps)</b>
<b>15-17</b>	Durango KC	Show - Close 4/29	Cortez, CO	Brown	G. Schwartz B. La Ham Q. N. La Ham
<b>16-17</b>	Mount Ogden KC	Show - Close 4/29	Ogden, UT	Onofrio	A. Downey Lt. Col. W.H. Pede
<b>16-17</b>	Council Bluffs KC Nebraska KC	Show - Close 4/29	Omaha, NE	Onofrio	L.H. Harris C. Bell
<b>16-17</b>	Rocky Mountain Yorkshire Terrier Club	George Alston Dog Handling Clinic	Castle Rock, CO Douglas Cty Fairgrounds	Alan Krenek 303-646-3094	\$150 - participant \$60 - observer
<b>22-23</b>	Central Wyoming KC	Show - Close 5/6	Casper, WY	Onofrio	C.E. Trotter W.F. Hixon
<b>24-25</b>	Laramie KC	Show - Close 5/6	Laramie, WY	Onofrio	J.E. Gregory D. Canino
<b>29-30</b>	Flatirons KC Evergreen KC	Show - Close 5/13	Longmont, CO	Onofrio	L. Mathis L.A. Reasin
<b>Jun 5</b>	<b>Northern California Samoyed Fanciers</b>	<b>Specialty - Close 5/20</b>	<b>Antioch, CA</b>	<b>Show Sec D Beckman</b>	<b>H. Dullnig H. Shore (Sweeps)</b>
<b>6-7</b>	Contra Costa KC	Show - Close 5/20	Antioch, CA	Brown	
<b>5-6</b>	Flagstaff KC	Show - Close 5/20	Flagstaff, AZ	Wilson	K. Anselm N. Liebes
<b>5-6</b>	Colorado Springs KC	Show - Close 5/20	Fountain, CO	Onofrio	G.J. Wallin T. Gomez
<b>5-6</b>	Utah Valley KC Bonneville Basin KC	Show - Close 5/20	Lehi, UT	Johnson	D.V. Hansen
<b>13</b>	<b>Chicagoland Samoyed Club</b>	<b>Specialty - Close 5/27</b>	<b>Grayslake, IL</b>	<b>A. Rhodie 847-362-8023</b>	<b>L. Grant Bond H. Janicki (Sweeps)</b>
<b>15</b>	<b>Denver Samoyed Assoc.</b>	<b>Program – Alan Odum</b>	Littleton Hospital 7:15 PM	T. Lisec	Judge Approval Process
<b>20-21</b>	West Texas KC	Show - Close 6/3	Odessa, TX	Onofrio	T. Gomez G.J. Wanner, Sr.
<b>27-28</b>	Terry-All KC	Show - Close 6/10	Brighton, CO	Onofrio	D.R. Deurksen B.J. Yamada
<b>July 11-12</b>	Roaring Fork KC	Show - Close 6/24	Eagle, CO	Onofrio	N/A
<b>16</b>	<b>Samoyed Club of Houston</b>	<b>Specialty - Close 6/24</b>	<b>Houston, TX</b>	<b>Newport</b>	<b>Joan Luna Karen Brooks(Sweeps)</b>
<b>17-19</b>	Houston KC Beaumont KC Galveston KC	Show - Close 6/24	Houston, TX	Antypas	A. Davis R. S. Pritchard J.h. Honig
<b>Aug 1</b>	<b>Denver Samoyed Assoc</b>	<b>All-Breed Fun Match Conf, Obed, Agiity</b>	<b>Lakewood, CO Morse Park</b>	<b>C. Groseth 526-1437</b>	<b>Microchip Clinic Canine Good Citizen</b>
<b>Aug 8-9</b>	Buckhorn Valley KC	Show - Close 7/22	Fort Collins, CO	Onofrio	N/A
<b>14</b>	<b>Samoyed Club of Washington State</b>	<b>Specialty - Close 7/29</b>	<b>Enumclaw, WA</b>	<b>Brown</b>	<b>R. Petersen-Berton M. Foster(Sweeps)</b>

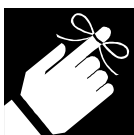
# SAM - O - GRAM

## 1998 Schedule of Events

Date	Organization	Event	Location	Contact	Conf. Judge (if Show)
<b>Aug 15-16</b>	Greeley KC	Show - Close 7/29	Greeley, CO	Onofrio	N/A
<b>20-23</b>	San Antonio KC Bexar Co KC KC or Grtr Victoria Comal Co KC	Show - Close 8/5	San Antonio, TX	Onofrio	N/A
<b>29-31</b>	Topeka KC Heart of America KC Leavenworth KC	Show - Close 8/12	Kansas City, MO	Crowe	N/A
<b>Sep 5</b>	Bonneville Basin KC	Show - Close 8/19	West Jordan, UT	Brown	N/A
<b>6</b>	Utah Valley KC	Show - Close 8/19	Lehi, UT	Brown	N/A
<b>5-6</b>	Cheyenne KC	Show - Close 8/19	Cheyenne, WY	Onofrio	N/A
<b>7</b>	Plum Creek KC	Show - Close 8/19	Highlands Ranch, CO	Onofrio	N/A
<b>11-13</b>	Greater Emporia KC Salina KC Wichita KC	Show - Close 8/26	Salina, KS	Onofrio	N/A
<b>12</b>	<b>Denver Samoyed Assoc.</b>	<b>Tournament</b>	<b>Sterne Park, CO</b>	<b>N. Golden</b>	<b>N/A</b>
<b>12</b>	<b>Denver Samoyed Assoc.</b>	<b>Specialty Match</b>	<b>Sterne Park, CO</b>	<b>J. Reller</b>	<b>N/A</b>
<b>19-20</b>	Grand Valley KC	Show - Close 9/2	Grand Junction, CO	Onofrio	N/A
<b>25-27</b>	Heart of Plains KC	Show - Close 9/9	Lubbock, TX	Onofrio	N/A
<b>26-27</b>	Sunflower KC of Olathe	Show - Close 9/9	Gardner, KS	Onofrio	N/A
<b>Oct 3-4</b>	Rio Grande KC Sangre De Cristo KC	Show - Close 9/16	Sante Fe, NM	Onofrio	N/A
<b>3-4</b>	Intermountain KC	Show - Close 9/16	Magna, UT	Onofrio	N/A
<b>9</b>	Rio Pecos KC	Show - Close 9/23	Alamogordo, NM	Onofrio	N/A
<b>10-11</b>	Mesilla Valley KC El Paso KC	Show - Close 9/23	Las Cruces, NM	Onofrio	N/A
<b>24-25</b>	Kachina KC	Show - Close 9/30	Goodyear, AZ	Crowe	N/A
<b>24-25</b>	Travis County KC	Show - Close 9/30	Austin, TX	Onofrio	N/A
<b>31</b>	Bartlesville KC Mid-Continent KC of Tulsa	Show - Close 10/14	Tulsa, OK	Onofrio	N/A
<b>Nov 1</b>	Tri-State	Show - Close 10/14	Tulsa, OK	Onofrio	N/A
<b>5-8</b>	Mid Del-Tinker KC Oklahoma City KC Canadian Valley KC Town & Country KC	Show - Close 10/21	Oklahoma City, OK	Onofrio	N/A
<b>6-7</b>	Scottsdale DFA Arizona White Mtn KC	Show - Close 10/21	Phoenix, AZ	Wilson	N/A
<b>14-15</b>	Evergreen Colorado KC Flatirons KC	Show - Close 10/28	Longmont, CO	Onofrio	N/A
<b>14-15</b>	Greater Sierra Vista KC Tucson KC	Show - Close 10/28	Tucson, AZ	Onofrio	N/A
<b>21-22</b>	Cornhusker KC Nebraska KC	Show - Close 11/4	Omaha, NE	Onofrio	N/A
<b>28</b>	<b>Samoyed Association of Canada</b>	<b>National Specialty</b>	<b>Toronto, Ontario</b>	<b>Judi Elford 705-932-2559</b>	<b>Dorothy Hodges Frank Gruber(Sweeps)</b>
<b>28-29</b>	Southern Colorado KC	Show - Close 11/11	Pueblo, CO	Onofrio	N/A
<b>Dec 5-6</b>	Fort Smith KC Muskogee KC	Show - Close 11/18	Muskogee, OK	Onofrio	N/A

Denver Samoyed Association  
c/o T. Peletis  
8885 West Clifton Avenue  
Littleton, CO 80128-5324

**SAM-O-GRAM**



**May 18, 1998 Meeting Reminder: Littleton Hospital - 7:15 PM**

- Vote on motion: "DSA to determine if we will donate the cost of a trophy to the Samoyed Club of Washington State Local Specialty (Range: \$5- \$50)."
- Other business pertinent to the club.
- Call Julie Beatty in advance to place your grocery certificate order!!!

## Denver Samoyed Rescue Report

no **HOME**, all **ALONE**

**April Rescue Placements: 1 (referred)**

**Year-to-Date: 9**

As of 05/1/98, we have the following Sammies available for adoption:

Female(Spring)      4 yrs.      House/Outdoor      Foster Home

Comments: Has an eye problem (the result of an immune system problem) that will require treatment with a topical ointment for life (\$15/mo.). She can be outside, but needs a place where she can get out of the light (at her own discretion) - prolonged exposure to light is uncomfortable for her. Good with kids and other dogs. Very cute!

Why: From Fort Collins H.S. Owner moved.

Male(Dylan)      2.5 yrs.      House/Outdoor      Owner

Comments: 100#. Medium activity level, does know basic obedience commands. OK with kids, cats, and other dogs. May suffer from separation anxiety. Will need to be crated if left for extended periods because he's destructive.

Why: Owner unwilling to confine dog and he's destructive if left alone for an extended time (8 hrs.)

The following Samoyeds are available at area shelters: *Contact a Rescue Committee member for current information .*

If you know anyone who might be interested, please call one of the Rescue Committee members. Thanks!

## Jokeline

### New findings in the Dead Sea Scrolls:

Adam said, "Lord, I do not see you. I am lonesome and cannot remember how much you love me". And God said, "I will create a companion for you who will be a reflection of my love. Regardless of how selfish and unlovable you may be, this companion will accept you and love you as I do". And God created a new animal to be a companion to Adam. And the new animal was pleased to be with Adam and he wagged his tail. God said, "Because I have created this animal to be a reflection of my love for you, his name will be a reflection of my own name, and you will call him Dog." And Dog lived with Adam and Adam

was comforted. One day, Adam's guardian angel came to the Lord and said, "Lord, Adam has become filled with pride. He struts and preens and believes he is worthy of adoration. Dog has taught him he is loved, but no one has taught him humility". And the Lord said, "I will create for him a companion who will see him as he is and remind him of his limitations". And God created Cat to be a companion to Adam. And Cat would not obey Adam. And when Adam gazed into Cat's eyes, he was reminded he was not worthy. And Adam learned humility. And Adam was greatly improved. And Cat did not care one way or the other.